



# CipherGuard

USB Encryption Key

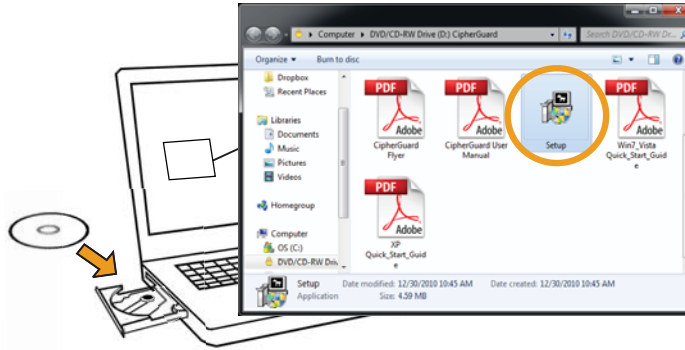
## Quick Start Guide for Windows Vista/7

Version 1.0

Copyright © 2011 Marathon6  
 Contact support@marathon6.com for technical inquiries.

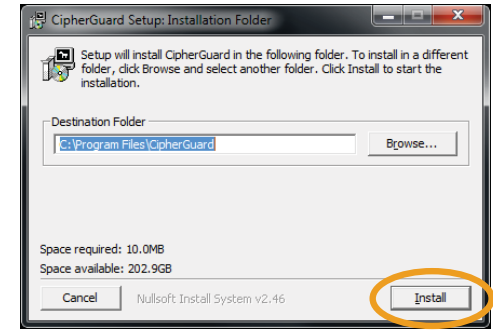


**1** You can download the latest CipherGuard software from <http://www.marathon6.com/cipherguard>.



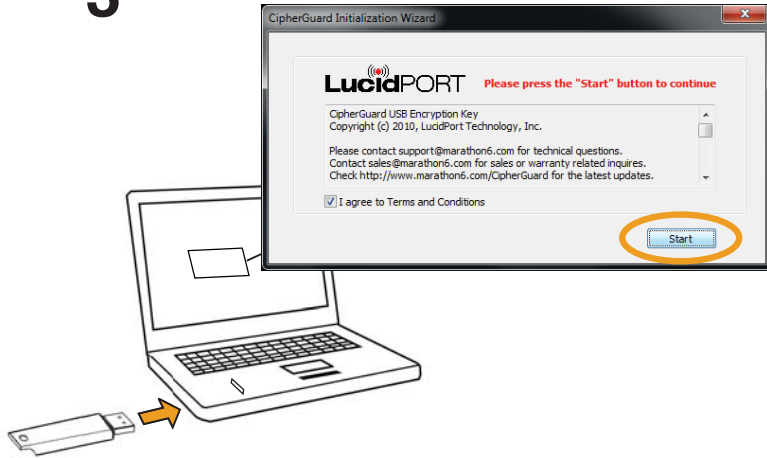
Note: If a User Account Control warning appears, click "Yes".

**2**



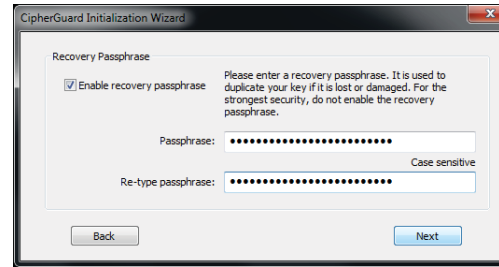
Note: If a Windows Security message appears, click "Install".

**3**



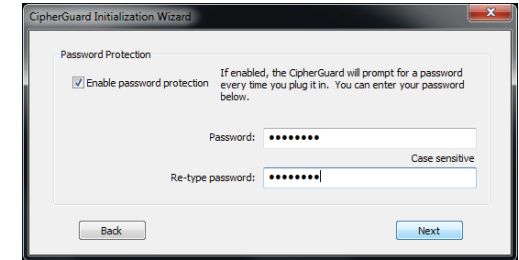
**4**

Add recovery passphrase (optional).



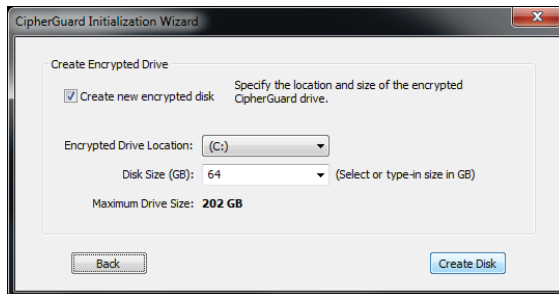
**5**

Add password protection (optional).



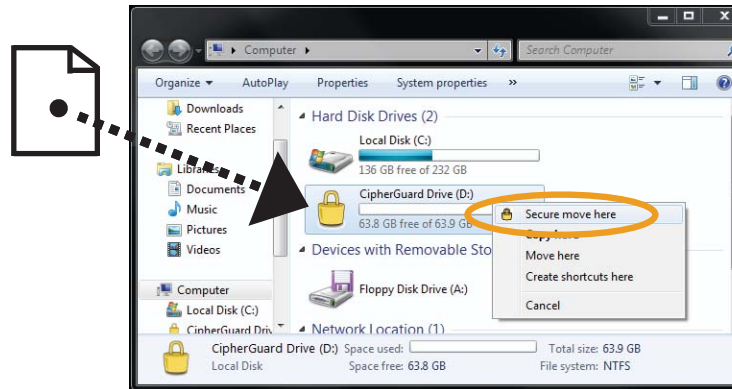
**6**

Determine the location and size of the protected drive and click "Create Disk". Allow time for the drive to format.



**7**

Hold down the right mouse button, then drag the selected file to the CipherGuard drive.



Warning: Do not remove the CipherGuard device while writing to the CipherGuard encrypted drive.



# CipherGuard USB Encryption Key



## Quick Start Guide for Windows XP

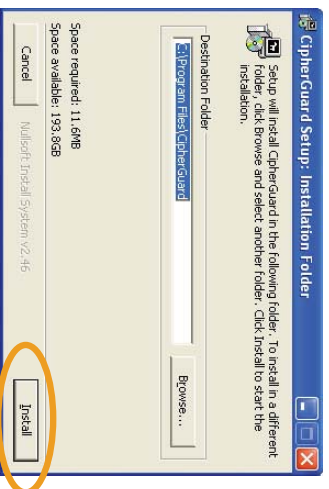
Version 1.0

**1** Insert CD and open "Setup" file.

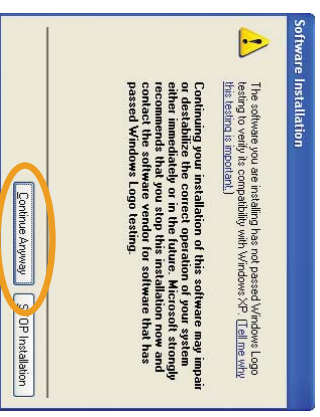


If a security warning appears, click "Run" to continue.

**2** Click "Install".



**3** Click "Continue Anyway".

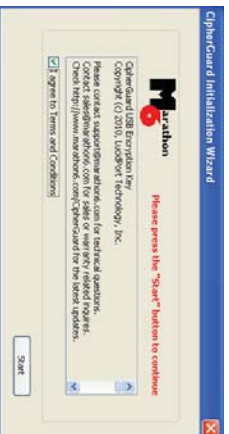


**4** Insert CipherGuard.

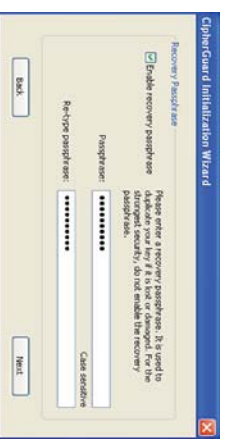
A Found New Hardware Wizard may appear. If so, follow the steps below, otherwise go to Step 5.

1. Select "No, not this time" and click "Next".
2. Select "Install the software automatically" and click "Next".
3. Click "Continue Anyway".
4. Click "Finish".

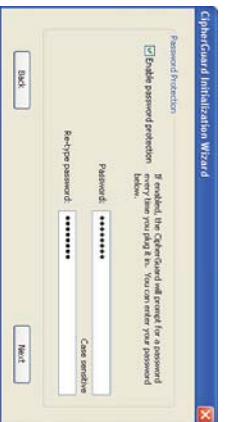
**5** Select "I agree..." and click "Start".



**6** Add recovery passphrase (optional).



**7** Add password protection (optional).



**8** Create encrypted drive. Determine the location and size of the protected drive.



**9** Open My Computer to access the encrypted drive.

To securely move files, hold down the right mouse button, then drag the selected file to the CipherGuard drive. Unplug the CipherGuard to hide the encrypted drive.



Warning: Do not remove the CipherGuard device while writing to the CipherGuard encrypted drive.

