

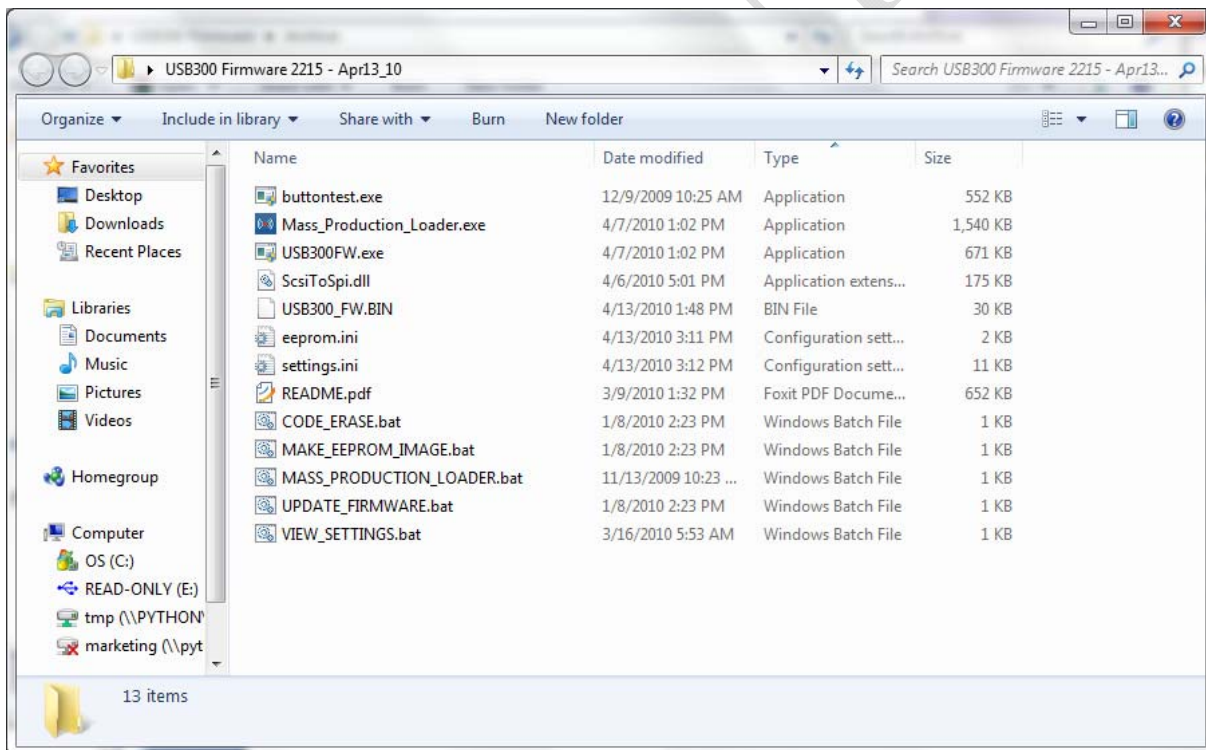
## 1 Introduction

The following instructions assume that a board with the USB302 is enumerated on a PC with either a USB 2.0 or 3.0 host. Only connect the board you want to update to your PC. Do not connect any other USB Mass Storage Devices, including card readers, to the PC.

**NOTE:** Please delete any previous copies of the USB302 firmware updater (the entire directory) and use this copy instead. Contact [support@lucidport.com](mailto:support@lucidport.com) if you have any questions or run into any problems.

## 2 Firmware Update Tools

Extract the USB302 Firmware xxxx.rar file. The contents will look like the image below.



The eprom.ini file describes the type of EEPROM or Flash that is used to hold the USB302 firmware. The settings.ini file is used for modifying the firmware with customer specific information – like vendor and device ids, serial numbers and descriptors, and GPIO usage. These files can be modified once and never changed again.

USB302\_FW.BIN is the firmware used by the update tool.

### 3 Change History

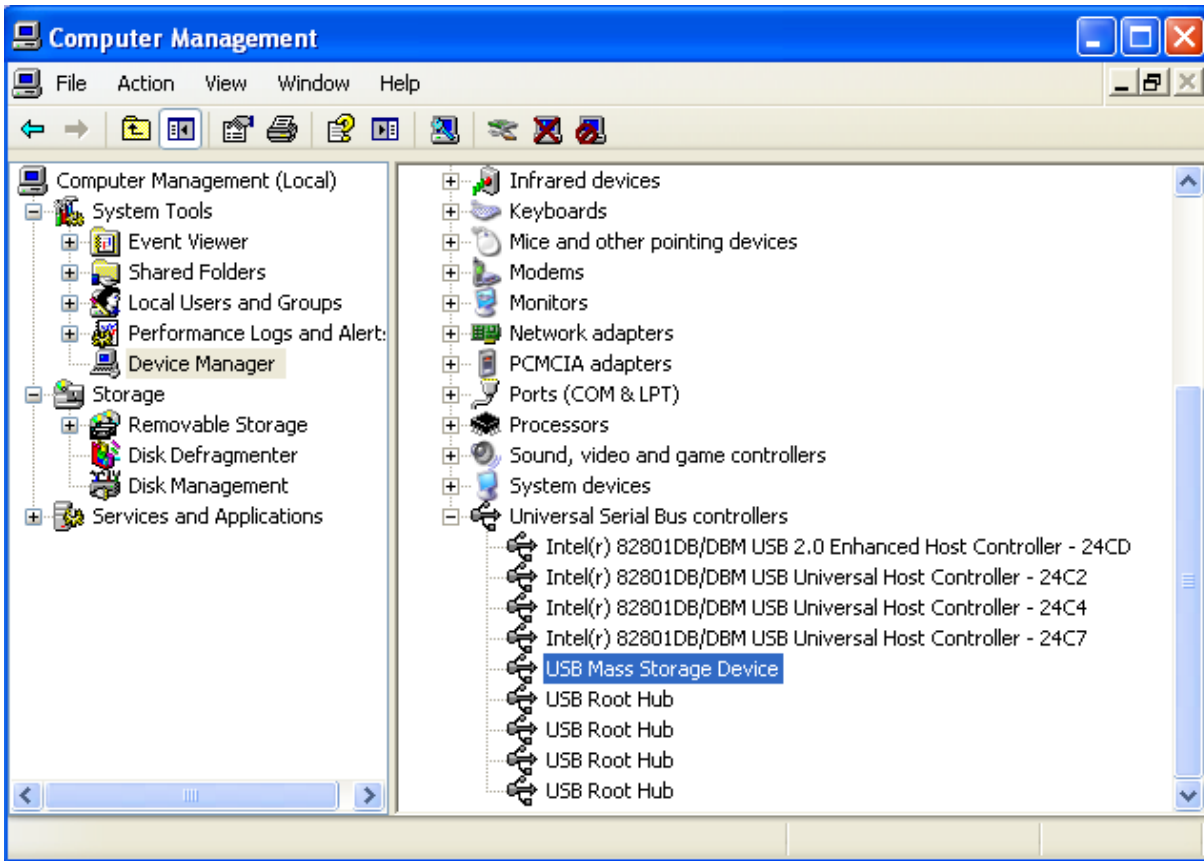
Added in FW 2333:

1. Eliminated the occasional instance where the write protect switch was not checked
2. Allow for hot swapping of optical drives
3. Fixed BREATH2 LED setting
4. Fixed BlinkOnNoHost and BlinkOnStandby LED settings
5. Fixed POWERINDICATOR LED setting
6. Blink Free Space Indicator on unknown free space
7. Fixed Blu-Ray plug and play
8. Added temperature selection for fan control
9. Added HDD health monitor
10. FW2286 locked the soft power button to button0. This change allows it to be either button as long as the programmable timer is greater than zero.

CONFIDENTIAL

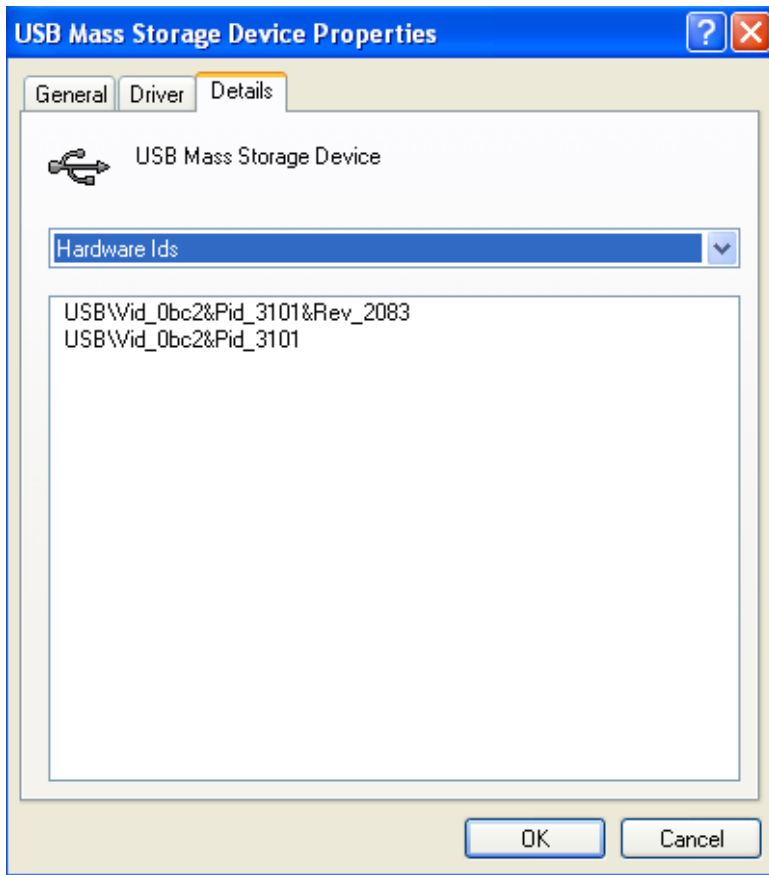
#### 11.4 Determining your current firmware version

To determine the firmware version running on your board, first plug it into a USB port. Right click on “My Computer” and select “Manage”. In the Computer Management window that pops up, select “Device Manager” on the left pane.



In the right side window, select “Universal Serial Bus Controllers”. In the list of items, right click on “USB Mass Storage Device”. Select “Properties” in the menu that comes up.

From the properties window, click the “Details” tab. Select “Hardware Ids” from the drop down menu. The “Rev\_ xxxx” indicates the current firmware version.



You will not be able to check the firmware version number if it has been overwritten in the settings.ini file.