

Creating User Keys

- 1 Insert Master Chameleon.**
- 2 Open the Chameleon Manager.**
(Start Menu > All Programs > Chameleon > Chameleon Manager)
- 3 Under the User Programming tab, enter a User ID for the new User Chameleon.**

Only the User ID is required. Many optional features are available to customize the User Chameleon according to your needs. Please reference the User Manual for more information about each one.

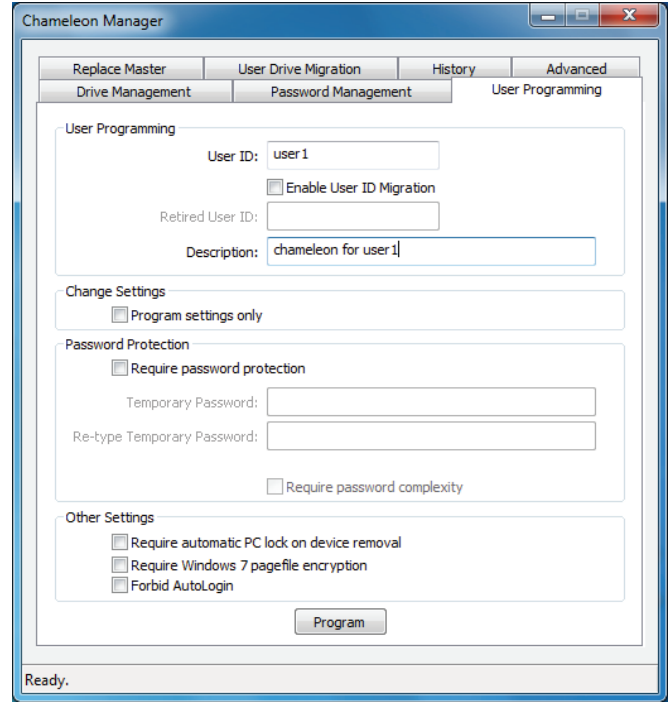
Once finished, click "Program."

- 4 Insert a new User Chameleon.**

A Found New Hardware Wizard may appear. If so, follow the steps below, otherwise go to Step 5.

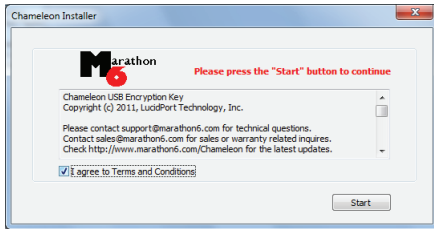
1. Select "No, not this time" and click "Next".
2. Select "Install the software automatically" and click "Next".
3. Click "Continue Anyway"
4. Click "Finish".

- 5 Unplug the User Chameleon after it is finished programming.**

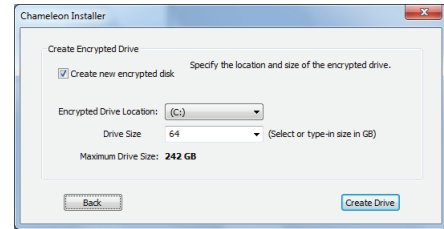


Creating User Chameleon Drives

- 1 Insert User Chameleon.**
- 2 Open the Chameleon Installer.**
(Start Menu > All Programs > Chameleon > Chameleon Installer)
- 3 Select "I agree..." and click "Start".**

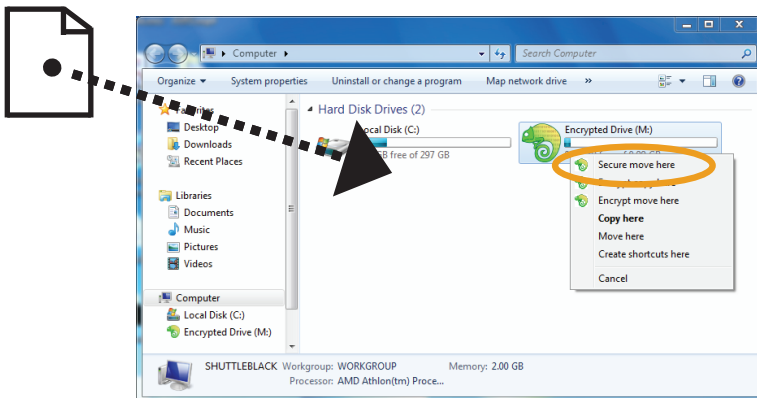


- 4 Create encrypted drive. Determine the location and size of the protected drive. Click "Finish" when it is done programming.**



- 5 Open My Computer to access the encrypted drive.**

To securely move files, hold down the right mouse button, then drag the selected file to the Chameleon drive. Unplug the Chameleon to hide the encrypted drive.



Warning: Do not remove the Chameleon device while writing to the Chameleon encrypted drive.

