

Chameleon Applications and Examples Schools

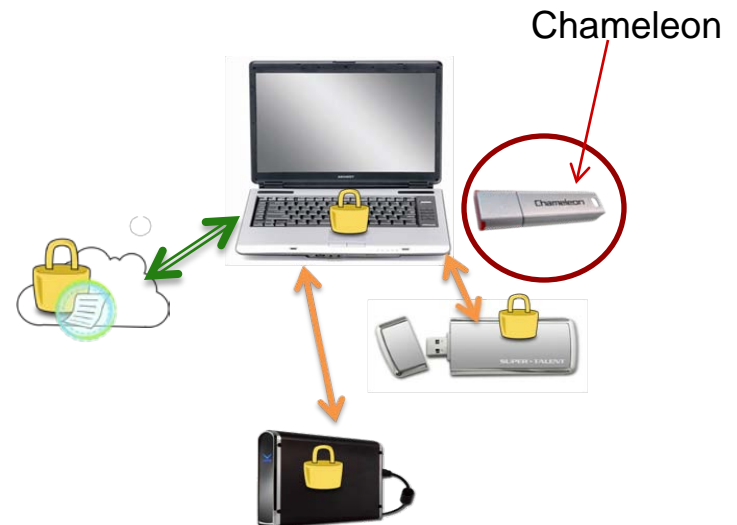


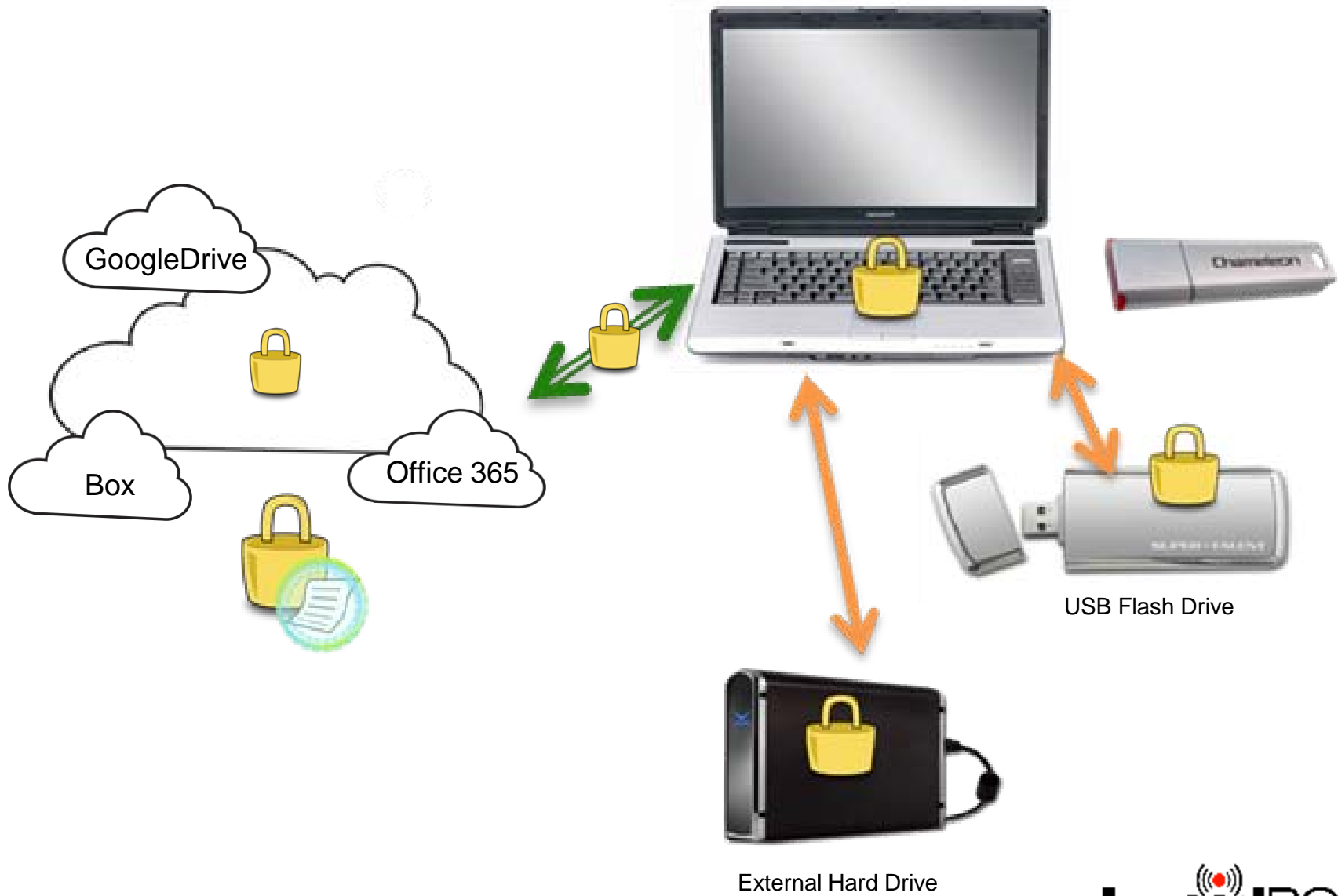
LucidPort Technology, Inc.
www.lucidport.com
sales@lucidport.com



Objectives

- A general purpose data protection device with strong encryption can be used anywhere,
 - supports multiple computers
 - storage devices including external flash drive and hard disk
 - Cloud computing
- Easy to use
- Secure



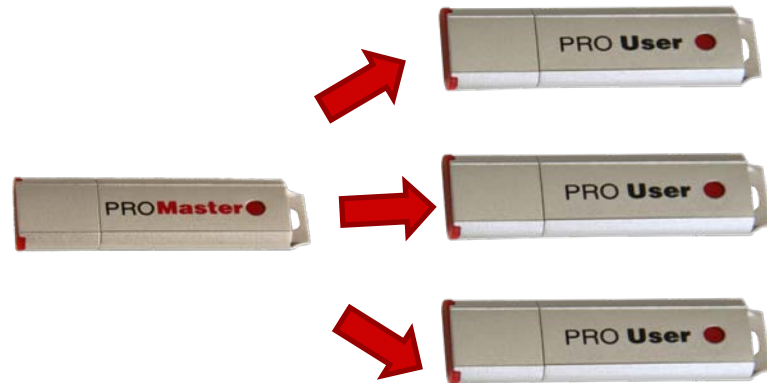


Applications

- Transfer and store sensitive information, such as bank account information, driver license numbers, social security numbers, employee records, customers, patient information or IP.
- Encrypt internal or external drives (Hard drives or USB Flash drives)
- Encrypt E-mail attachments
- Store data to cloud storage
- Store emails, web login passwords, such as, Social networks accounts(Facebook, Twitter, LinkedIn, YouTube)

Chameleon at School

The Chameleon PRO manages data security for organizations with full AES-256 encryption, the same standard used by the US government and many Fortune 500 companies. Chameleon PRO Master Key manages multiple PRO User keys. Plug in the Chameleon to access your files. Unplug it to secure them.



School Teacher Application

CONFIDENTIAL INFORMATION

Test materials, test results, student information or student reports.



Limited Resource

Teachers sharing computers at school.

PASSWORD PROTECTION

Password can be easily compromised.



Problems encountered :

- ❖ Confidential information being stolen.
- ❖ Student records being hacked and changed.
- ❖ No privacy in limited resource environment.



Solution:



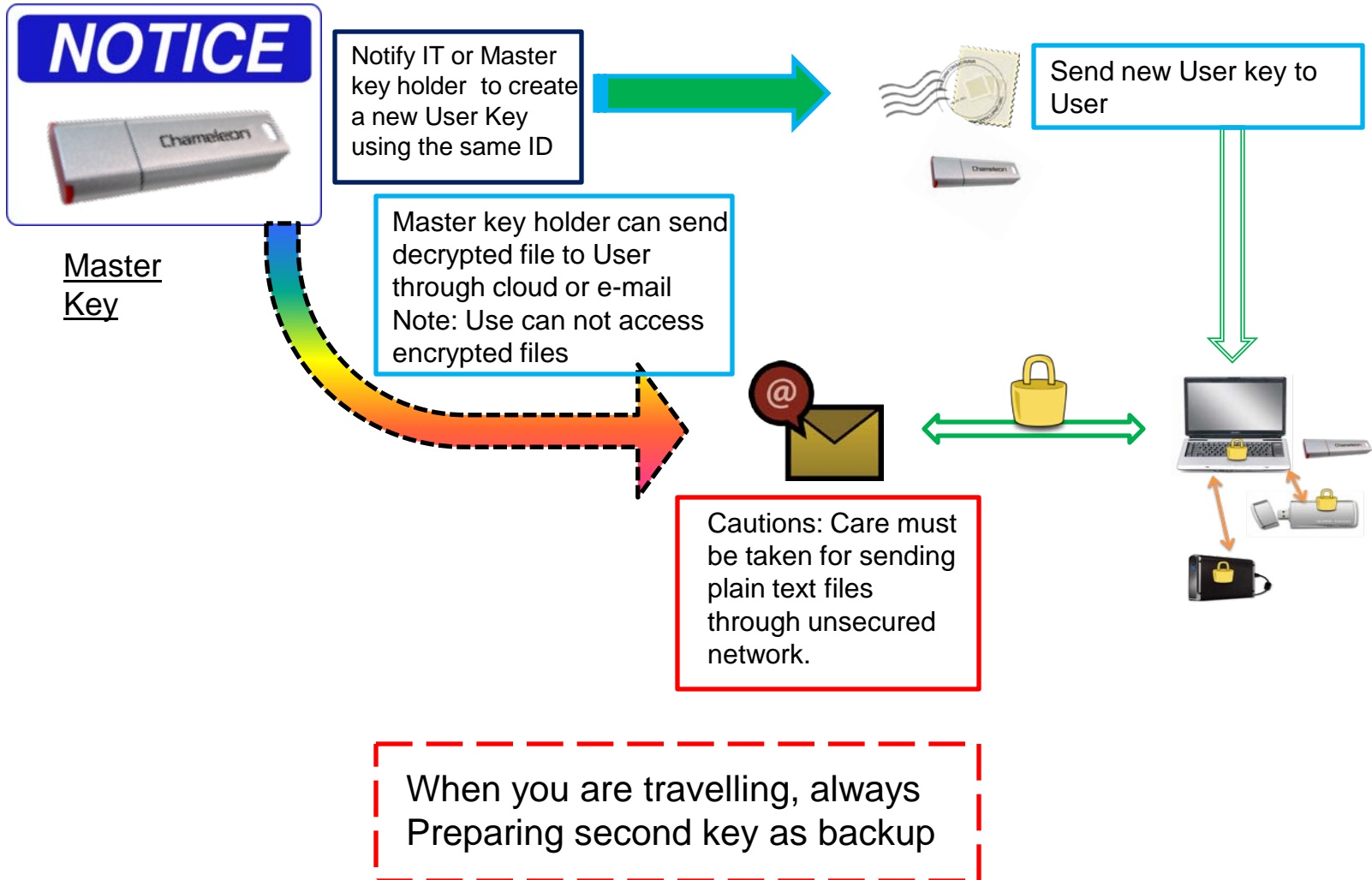
Teachers should use **Chameleon** to create encrypted drives or encrypted files. Encrypted drives can only be viewed and accessed when its associated Chameleon is physically present. Therefore, teachers' confidential materials are secured. Teacher will also have 100% privacy on their own materials while others are using the same computer.



If you lose your User Chameleon

- Admin creates a duplicate User Chameleon
 - Insert the master Chameleon key.
 - Create a user key, enter the user ID, specify if a password is required
 - Unplug the master key then insert a user key
 - The user key will be programmed with the specified user ID
- Locking out the lost Chameleon
 - Insert the master Chameleon key into the PC with the Chameleon drive
 - Select “Change Encryption”
 - Assign a new user ID to the Chameleon drive
 - Chameleons with the old user ID can no longer access the drive
 - The old user keys can re-programmed with the new user ID

If you lose your User Chameleon during travelling?



Contact

- Technical Support
 - support@lucidport.com
- Sales/ Business Inquires
 - sales@lucidport.com
- Address:
 - 485 E. Evelyn Ave., Sunnyvale, CA 94086
- Tel: 408-720-8800, Fax 408-720-8900
- www.lucidport.com