

Chameleon Applications and Examples USB Flash Drive

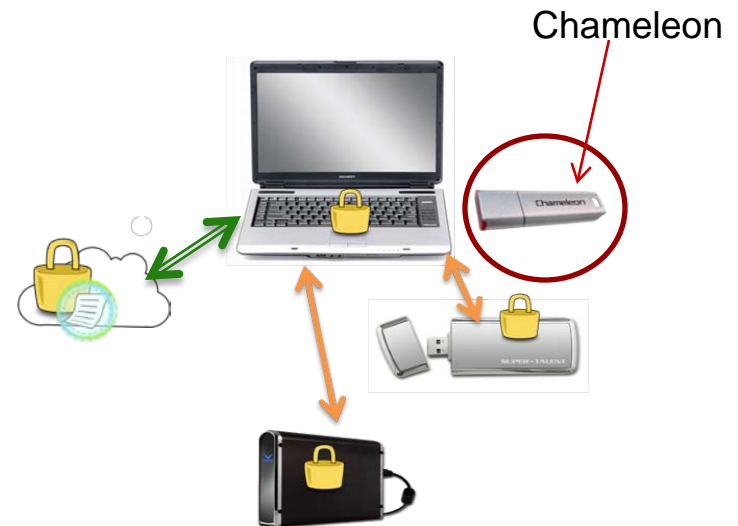


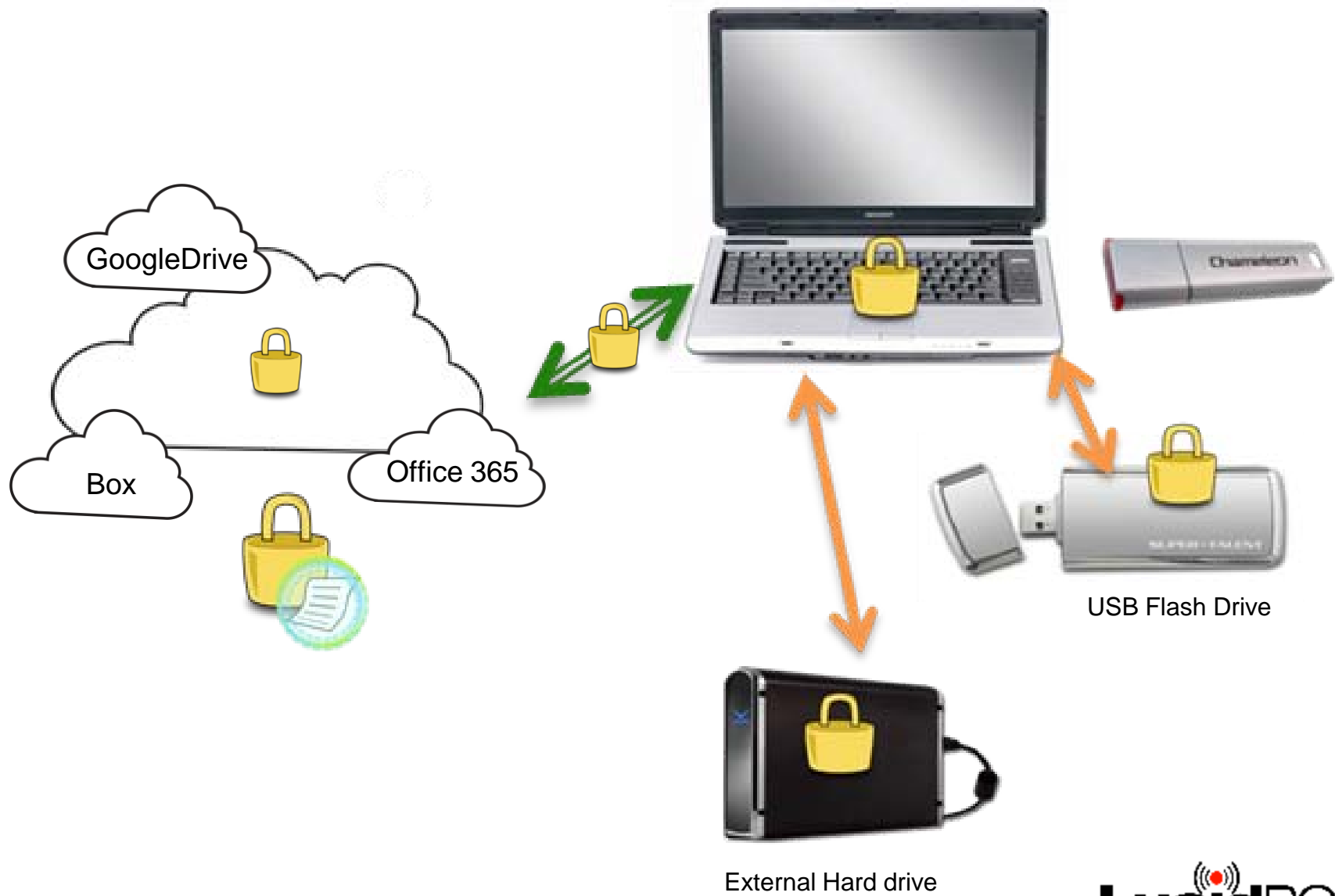
LucidPort Technology, Inc.
www.lucidport.com
sales@lucidport.com



Objectives

- A general purpose data protection device with strong encryption can be used anywhere,
 - supports multiple computers
 - storage devices including external flash drive and hard disk
 - Cloud computing
- Easy to use
- Secure





Applications

- Transfer and store sensitive information, such as bank account information, driver license numbers, social security numbers, employee records, customers, patient information or IP.
- Encrypt internal or external drives (Hard drives or USB Flash drives)
- Encrypt E-mail attachments
- Store data to cloud storage
- Store emails, web login passwords, such as, Social networks accounts(Facebook, Twitter, LinkedIn, YouTube)



USB Flash Drive gives you convenience. With the Chameleon, you can achieve maximum data security for your flash drive.

Flash drive is the easiest way to carry your data around, but it runs a great risk of losing the key. With Chameleon drive being set up in flash drive, now the flash key is safe from losing important data. You may also use Chameleon to encrypt single file, a group of files or folders stored in your Flash drive.

Once Chameleon key is removed, you can not see files that are stored in the encrypted drive and your private (encrypted) data is safe.



Why Encrypt Flash drives?

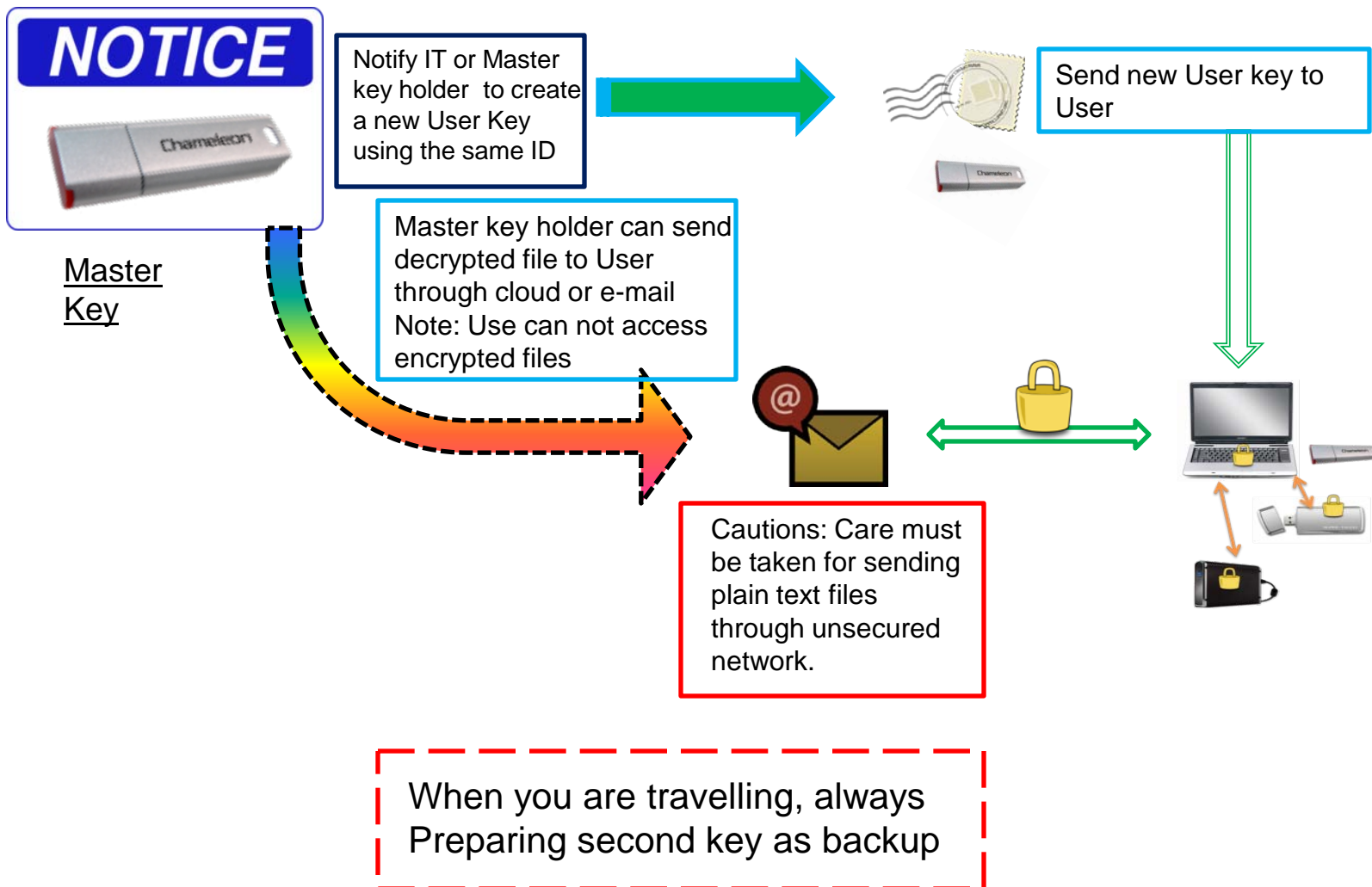
- Flash drives collect lots of sensitive data
- Flash drives are easily lost and / or stolen



If you lose your User Chameleon

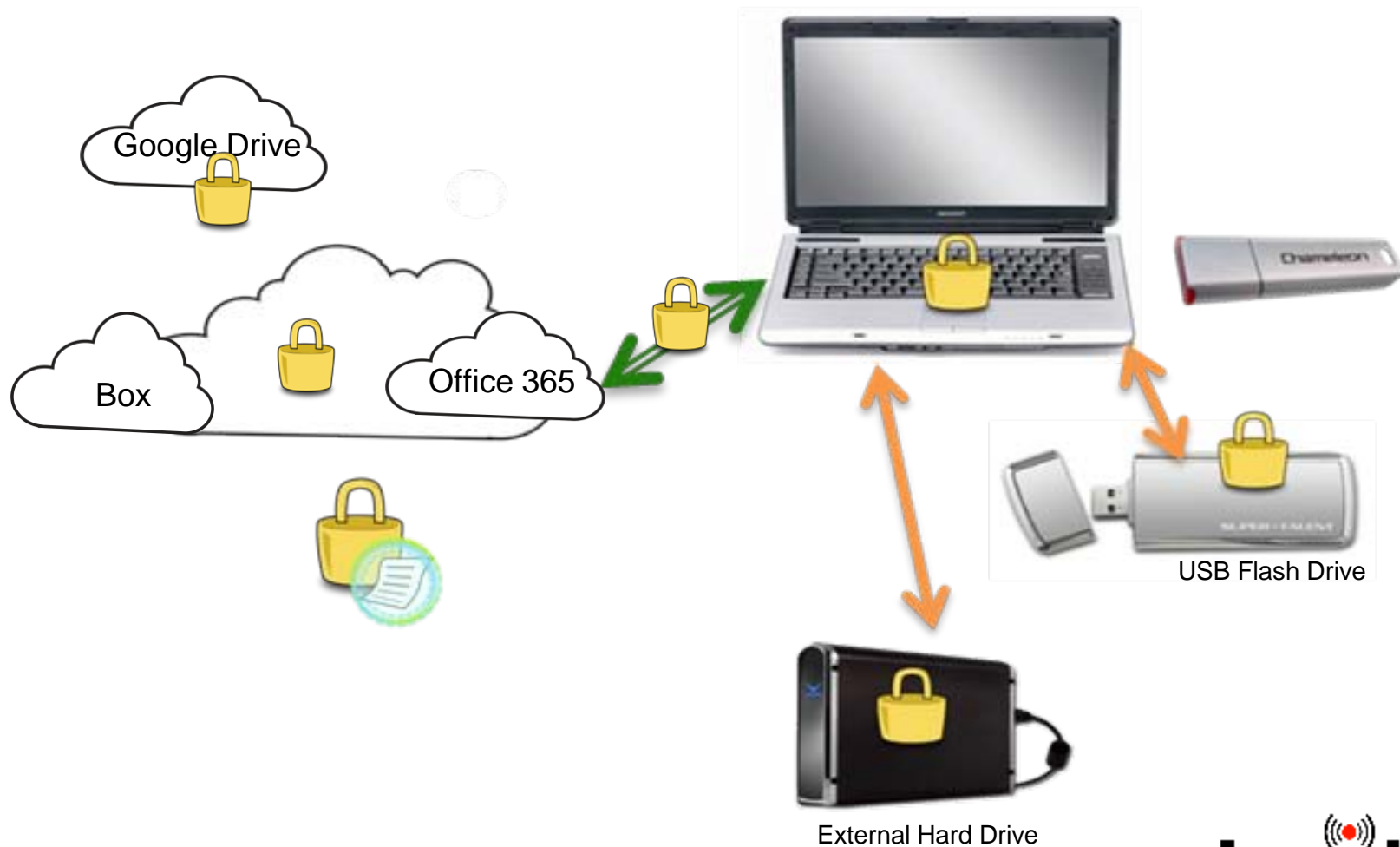
- Admin creates a duplicate User Chameleon
 - Insert the master Chameleon key.
 - Create a user key, enter the user ID, specify if a password is required
 - Unplug the master key then insert a user key
 - The user key will be programmed with the specified user ID
- Locking out the lost Chameleon
 - Insert the master Chameleon key into the PC with the Chameleon drive
 - Select “Change Encryption”
 - Assign a new user ID to the Chameleon drive
 - Chameleons with the old user ID can no longer access the drive
 - The old user keys can re-programmed with the new user ID

If you lose your Chameleon (User) during travelling?



If you lose your USB Flash drive during travelling?

Chameleon & Cloud



Contact

- Technical Support
 - support@lucidport.com
- Sales/ Business Inquires
 - sales@lucidport.com
- Address:
 - 485 E. Evelyn Ave., Sunnyvale, CA 94086
- Tel: 408-720-8800, Fax 408-720-8900
- www.lucidport.com